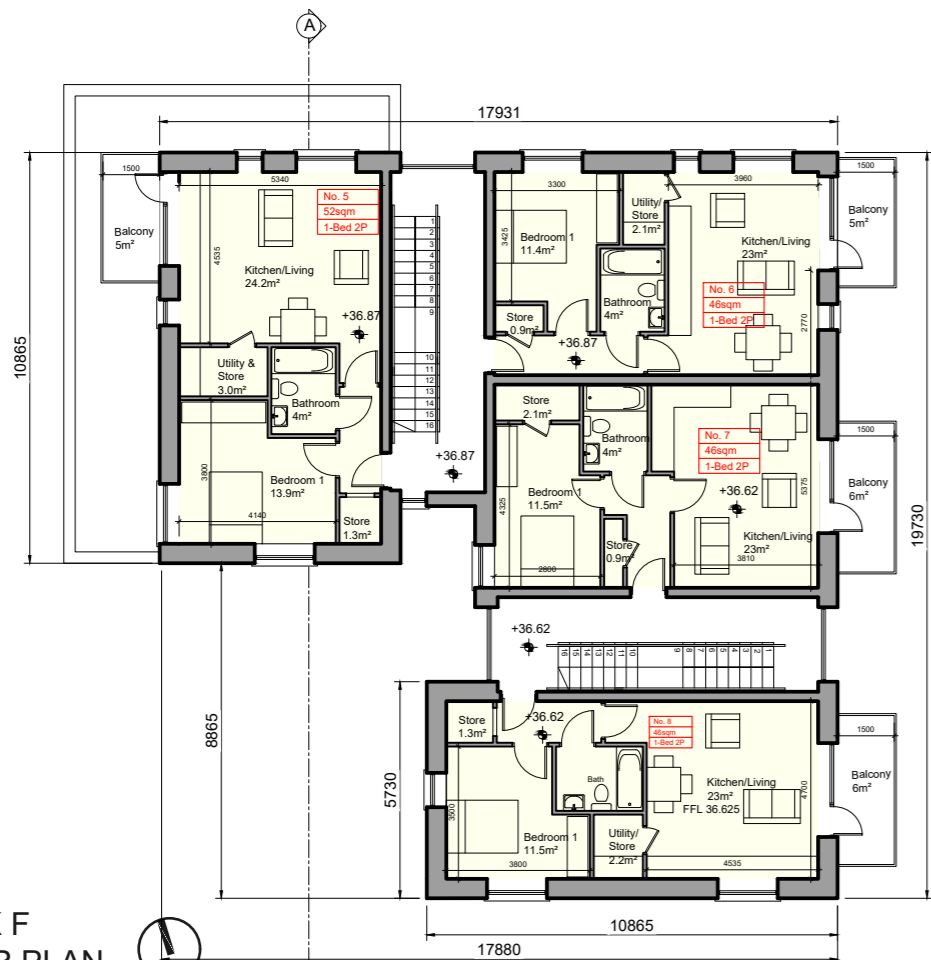
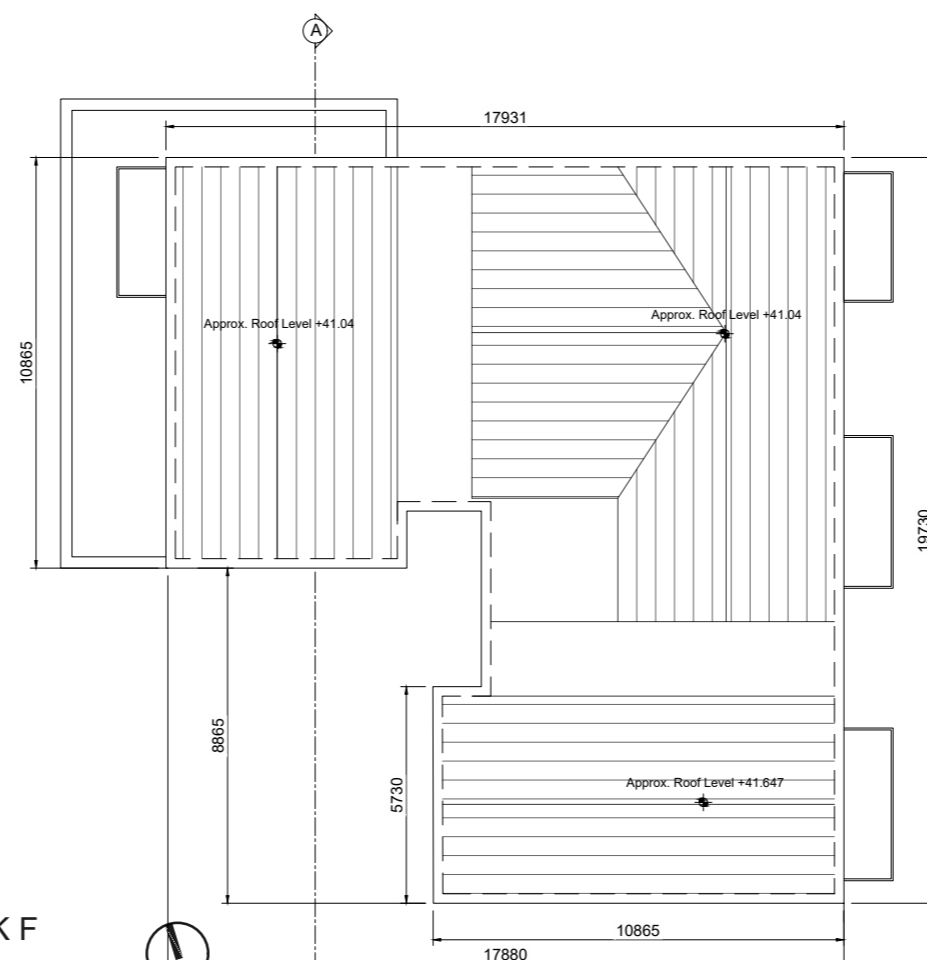


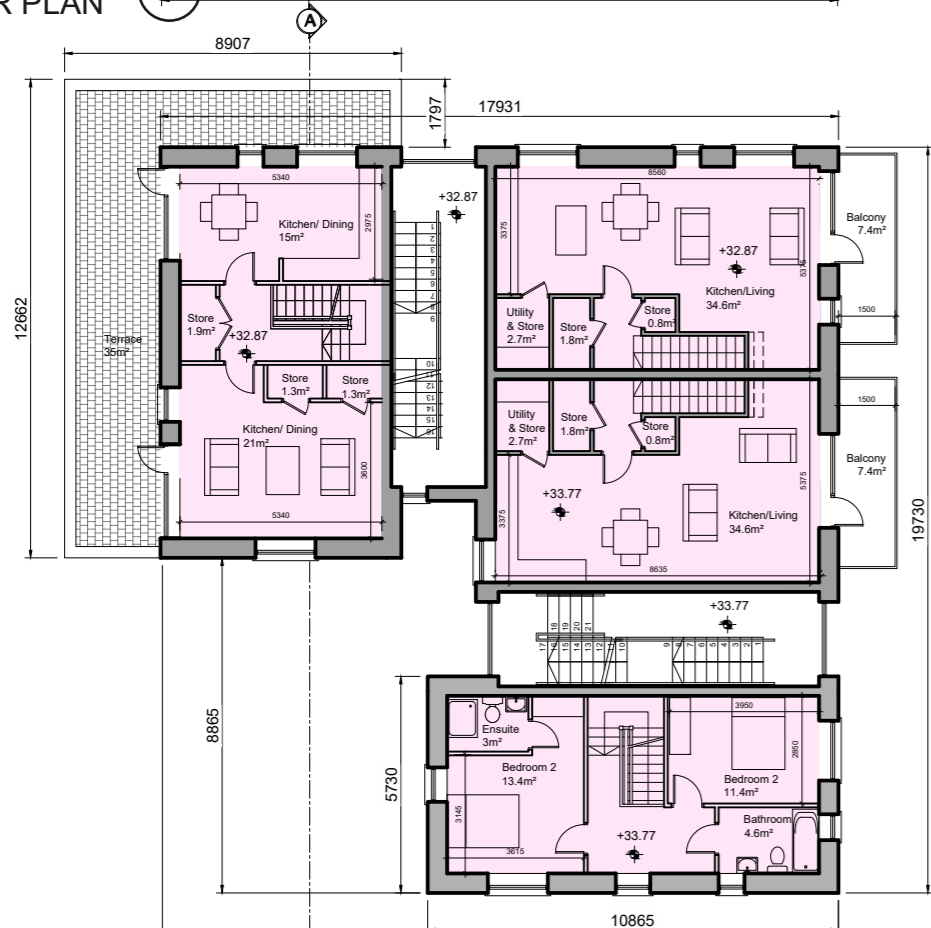
DUPLEX BLOCK F
SECOND FLOOR PLAN



DUPLEX BLOCK F
ROOF PLAN



DUPLEX BLOCK F
FIRST FLOOR PLAN



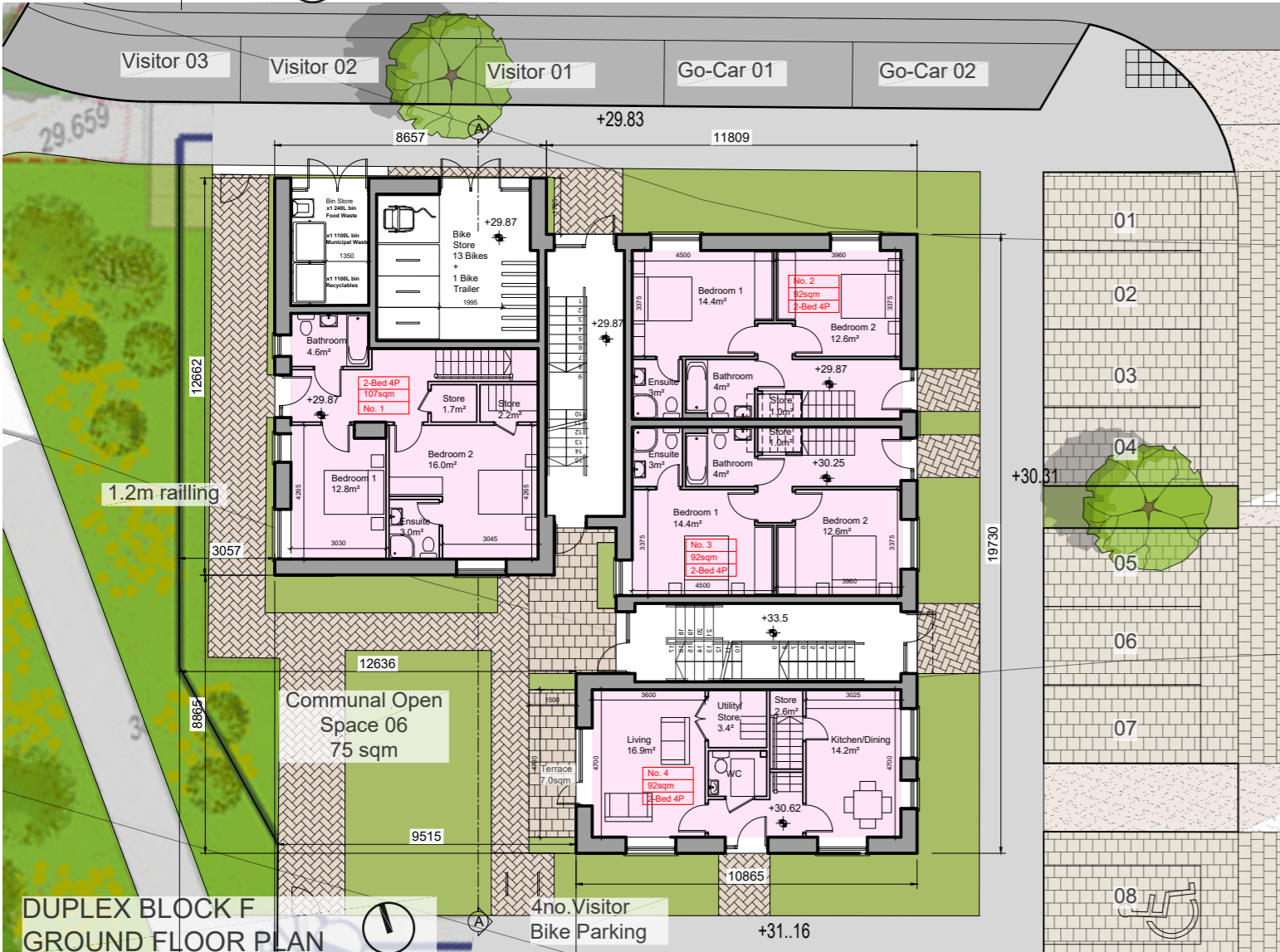
DUPLEX BLOCK F
EAST ELEVATION



DUPLEX BLOCK F
SECTION A-A



DUPLEX BLOCK F
GROUND FLOOR PLAN



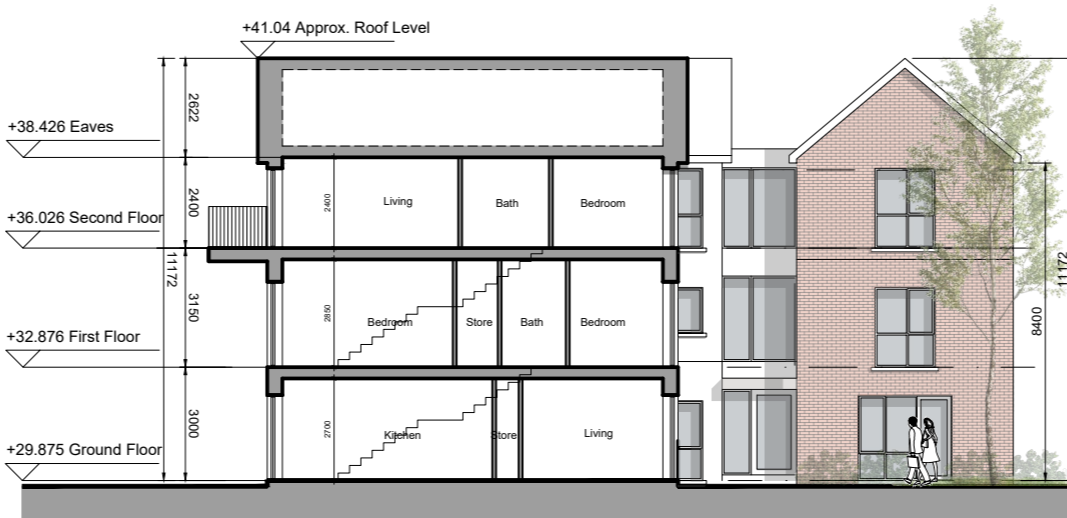
DUPLEX BLOCK F
WEST ELEVATION (WOODLAND TRAIL;)



DUPLEX BLOCK F
SOUTH ELEVATION



DUPLEX BLOCK F
NORTH ELEVATION (STREET ELEVATION)



Unit Type

- 2 Bed Apartment - 4 Person
- 1 Bed Apartment

Dip. Block	1 Beds	2 Beds	Total Units
F	4	4	8

- © This drawing is copyright.
- 1 Do not scale this drawing.
- 2 Errors and omissions to be immediately notified to Architect.
- 3 All dimensions to be checked on site.
- 4 To be read with relevant Engineers drawings.

Note on Internal Floor Plans
All noted room areas are gross.

The proposed areas and aggregate areas comply with *Sustainable Urban Housing: Design Standards for New Apartments Guidelines for Planning Authorities*. (December 2020)

Where bedroom areas are noted they are exclusive of any built-in storage space.

Storage is generally provided off the hallway or kitchen, and is not provided within a bedroom. Furniture, fittings and fixtures shown on the plans are indicative.

External Finishes:
Roof: Slate or clay/concrete tiles with solar thermal or photovoltaic panels subject to orientation and detailed design

Walls: Selected facing brick with render where indicated on drawings

Windows: uPVC or Aluminium framed window system

Gutters/downpipes: uPVC or aluminium

Balconies: Projecting: Toughened glazing & stainless steel handrails on precast concrete or metal frame galvanized steel base and guarding/ railing.

Entrance Canopy: Pressed or standing seam metal on Timber framing

revisions	date	ins
description		
Duplex Block F		
Floor Plans, Roof Plans, Section & Elevations		

job	scale
Development at Oldtown, Swords, Co. Dublin Phase 5	1:200 A2
client	date
Gerard Gannon Properties	MAR '22
ISSUE	drawn
Planning SHD Stage 3	PG/LD
	checked
	PG

CONROY CROWE KELLY ARCHITECTS
65 MERRION SQUARE DUBLIN 2
PHONE 6613990/1 FAX 6765715
E-MAIL info@cck.ie